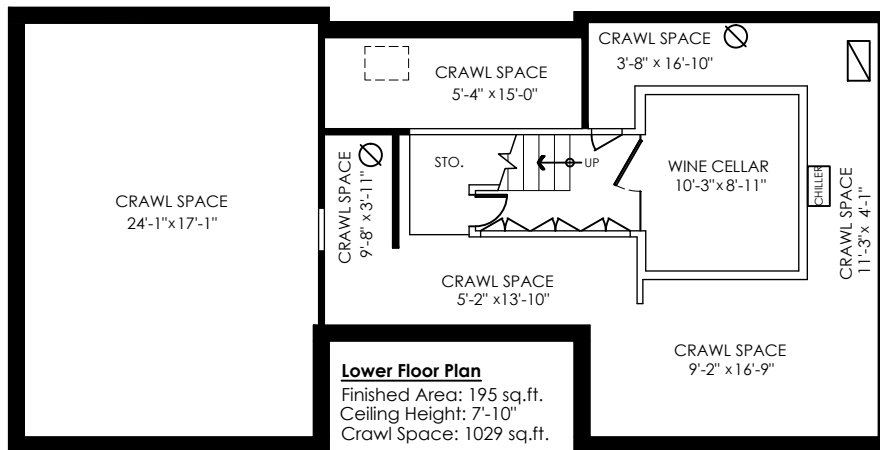
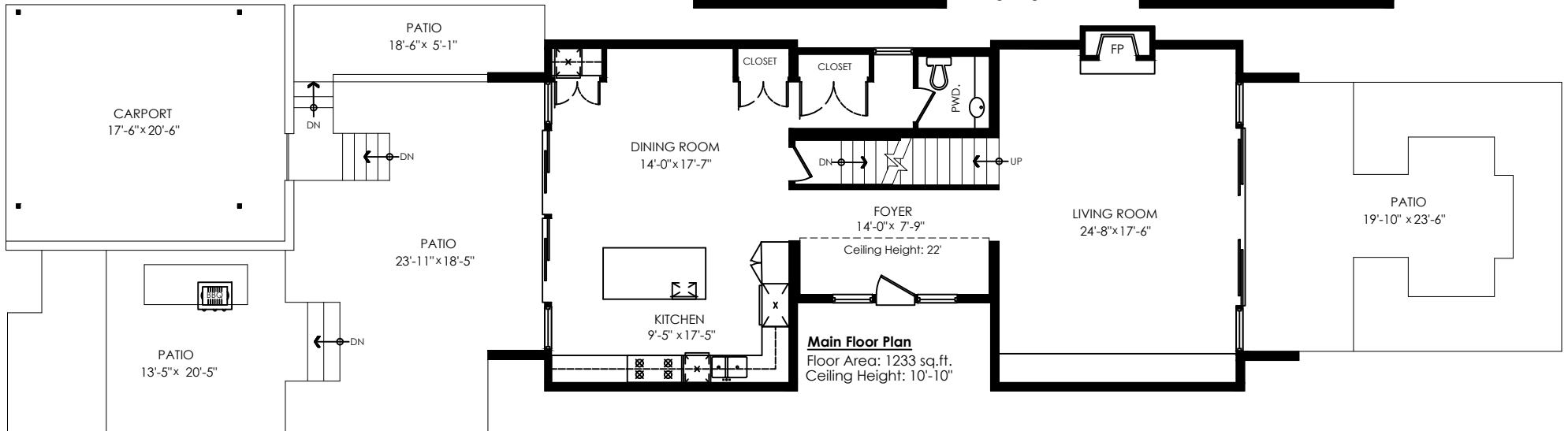
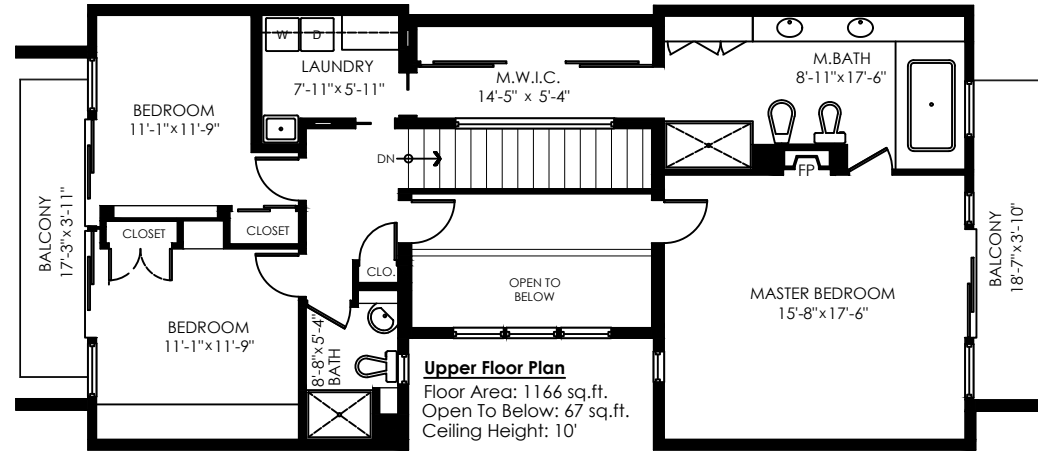


**GREGG
BAKER**

gregg@greggbaker.ca
www.greggbaker.ca
Direct: 604 649 1259

ENGEL & VÖLKERS®

1109 Maple Street Vancouver



Main Floor:	1,233 sq.ft.
Upper Floor:	1,166 sq.ft.
Finished Lower Floor:	195 sq.ft.
Sub Total:	2,594 sq.ft.

Crawl Space:	1,029 sq.ft.
Open To Below:	67 sq.ft.
Total:	3,690 sq.ft.

North Patio:	467 sq.ft.
South Patios:	829 sq.ft.
Carport:	359 sq.ft.
North Balcony:	72 sq.ft.
South Balcony:	69 sq.ft.
Total Outdoor Area:	1,796 sq.ft.



SCALE
0' 5'