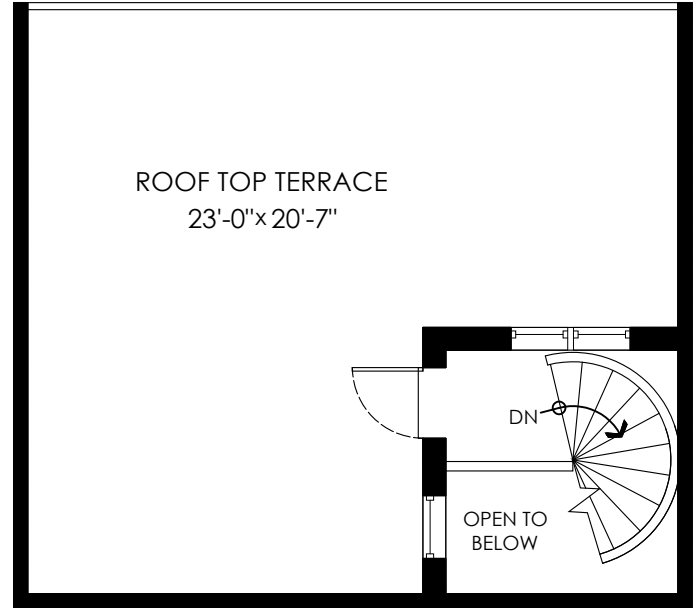
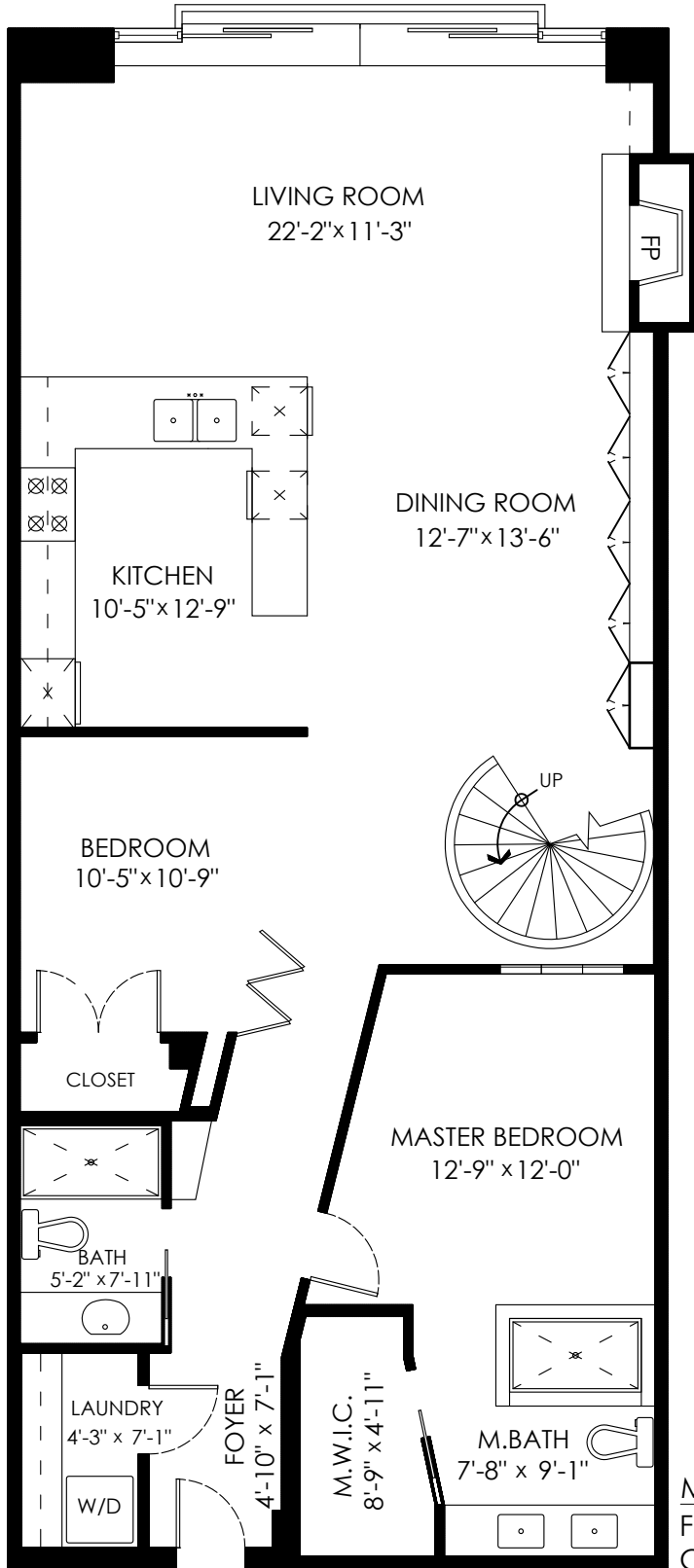


Main Floor: 1,344 sq.ft
Mezzanine: 93 sq.ft
Total: 1,437 sq.ft

Patio: 419 sq.ft

Ceiling Height: 8'-4"



Upper Patio Plan

Patio Area: 419 sq.ft.

Mezzanine

Landing Area: 28 sq.ft.

Stairs and Open To Below: 65 sq.ft.

Main Floor Plan

Floor Area: 1344 sq.ft.

Ceiling Height: 8'-4"

