

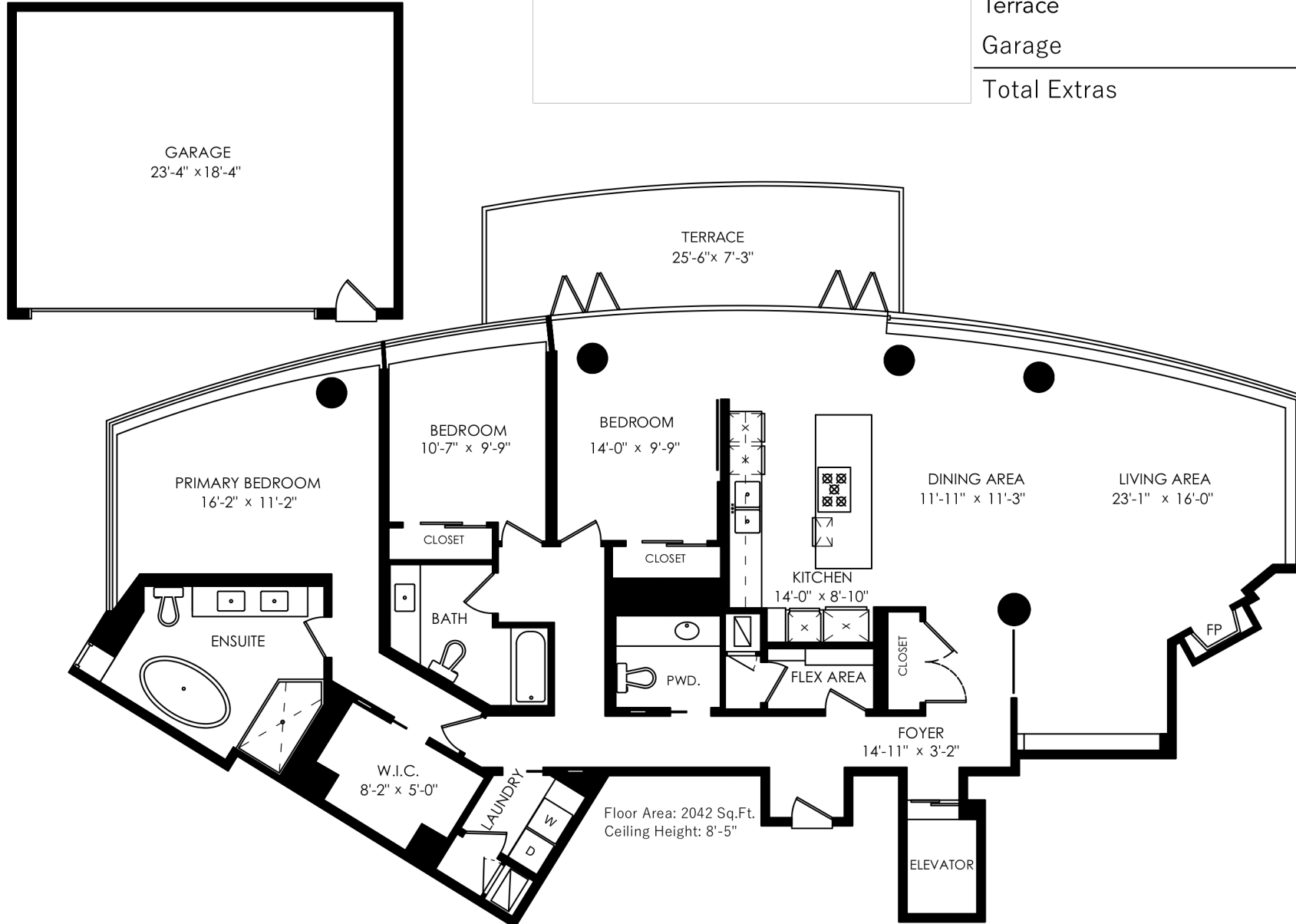
**GREGG
BAKER**

gregg@greggbaker.ca
www.greggbaker.ca
Direct: 604 649 1259

ENGEL & VÖLKERS®

1602-1560 Homer Mews Vancouver, BC

Floor Area	2042 SQ.FT.
Terrace	196 SQ.FT.
Garage	474 SQ.FT.
Total Extras	670 SQ.FT.



Floor plan not suitable for architectural/construction purposes. ANSI Z765 standard used to calculate square footage. Buyer to verify.

